



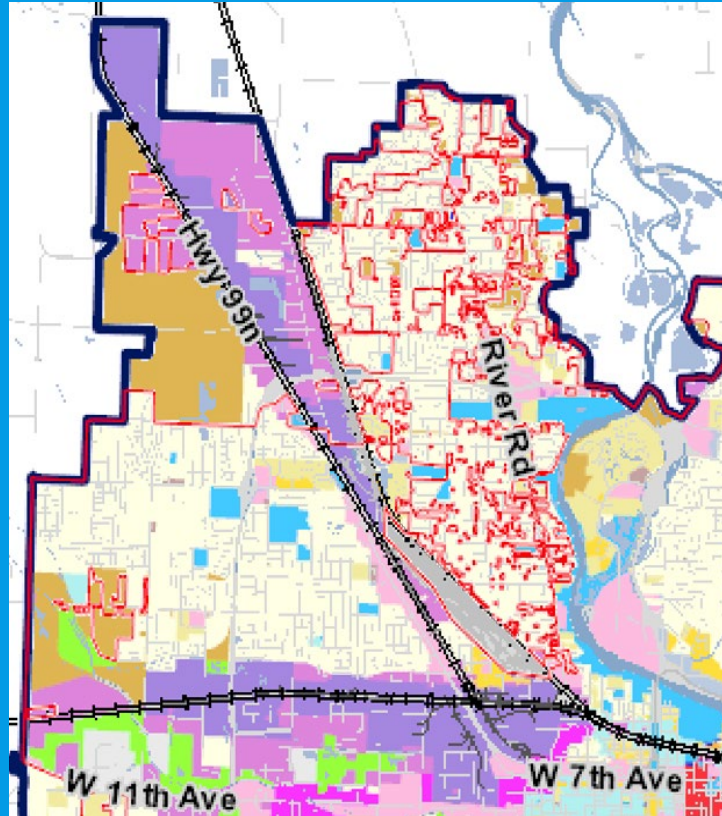
River Road in Eugene

*A Development and Transportation
Case Study*

Dr. Rob Zako



River Road - Santa Clara Zoning



River Road - Santa Clara Neighborhoods



Parks and Natural Resources: What do we want to happen with outdoor spaces?



Transportation: How will we get around?



Land Use: What do we want where? How will the neighborhood look and feel?

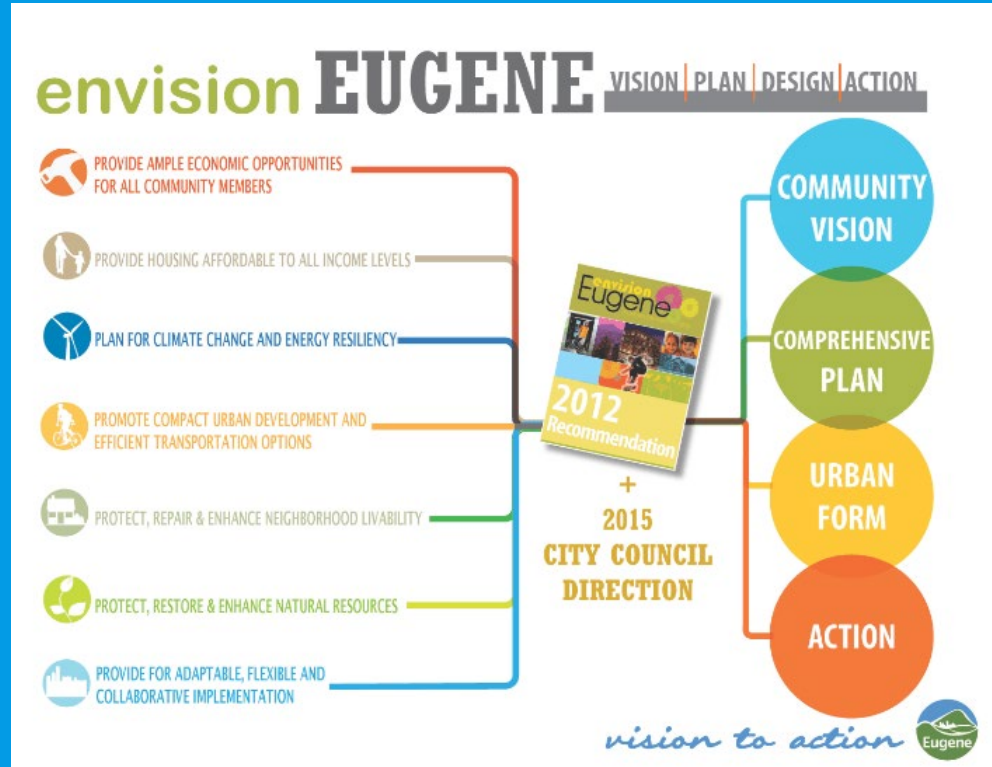


Citywide Goals & Plans

Envision Eugene: The Seven Pillars

1. Provide ample **ECONOMIC OPPORTUNITIES** for all community members
2. Provide **HOUSING AFFORDABLE** to all income levels
3. Plan for **CLIMATE CHANGE** and **ENERGY RESILIENCY**
4. Promote **COMPACT URBAN DEVELOPMENT** and **EFFICIENT TRANSPORTATION OPTIONS**
5. Protect, repair and enhance **NEIGHBORHOOD LIVABILITY**
6. Protect, restore and enhance **NATURAL RESOURCES**
7. Provide for **ADAPTABLE, FLEXIBLE** and **COLLABORATIVE** implementation

Envision Eugene: Vision to Action

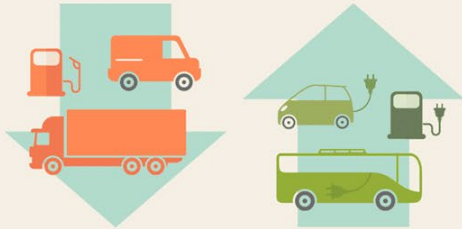


Climate Change

COMMUNITY CLIMATE RECOVERY ORDINANCE GOALS

Reduce Fossil Fuel Use

50% reduction by 2030 compared to 2010



Reduce Community-wide GHG Emissions

Science-based goal to reduce ghgs to Eugene's average share of 350ppm by 2100



Active Transportation

Eugene 2035 TSP



Goal 5: By the year 2035 triple the percentage of trips made on foot, by bicycle, and by transit from 2014 levels.




Transportation Safety

Vision Zero


Resolution No. 5143,
setting as official policy
the Vision Zero goal that
no loss of life or serious
injury on our transportation
system is acceptable.



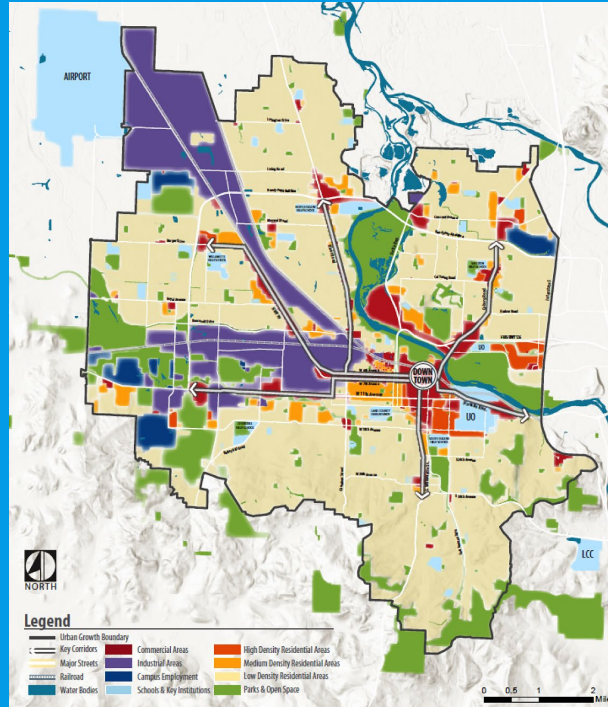
ONE TRAFFIC DEATH IS TOO MANY



2018-2023
Vision Zero Action Plan



Community Vision



Community Vision
for Homes, Jobs, Parks & Schools



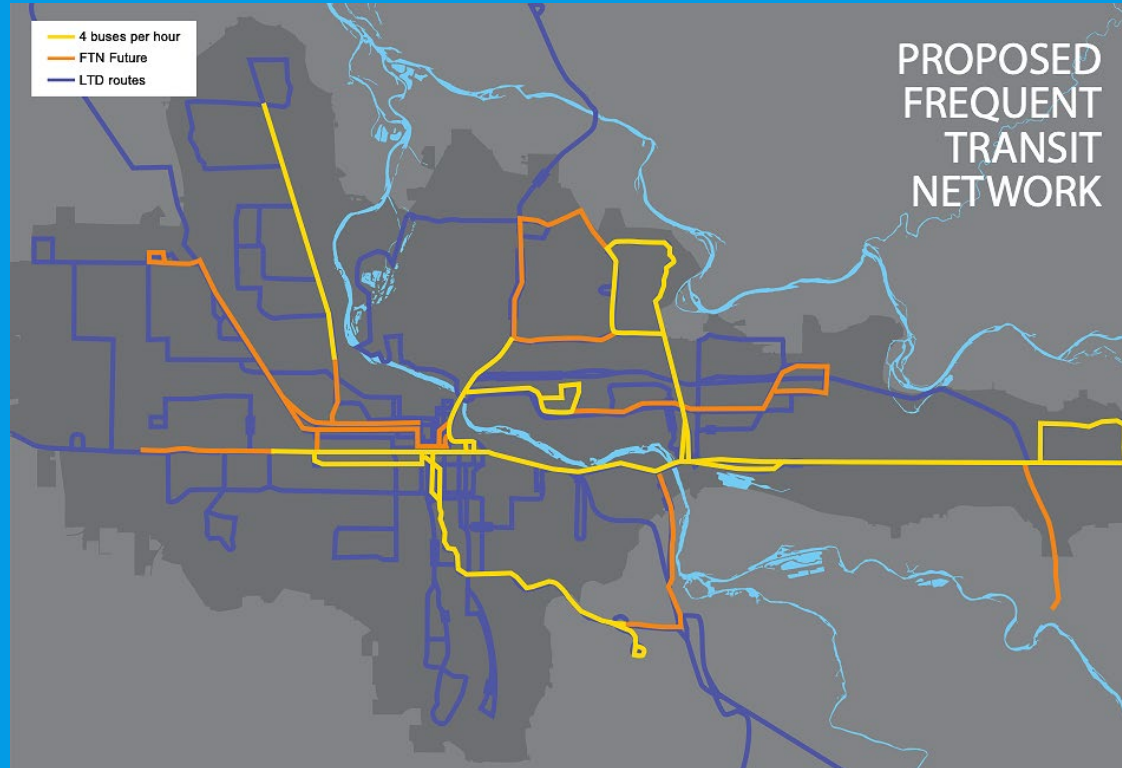
Map is not tax lot specific and is for illustrative purposes only.



Planned Transportation Projects



Frequent Transit Network



High Crash Network

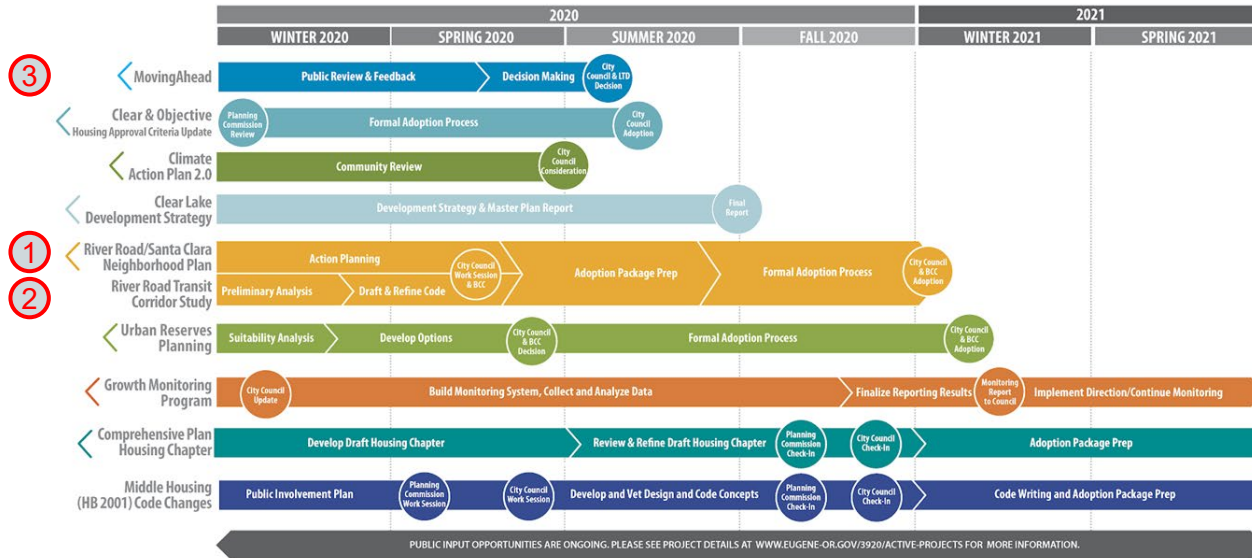


Current Efforts

Active Planning Projects

Envision Eugene Project Timelines

DRAFT



← Project initiated before Winter 2020
 Dates are tentative and subject to change. Please see the latest project information at: www.eugene-ore.gov/3920/Active-Projects.
 BCC: Board of County Commissioners
 LTD: Lane-Traill District



1. RR- SC Neighborhood Plan



1. RR- SC Neighborhood Plan

Economic Development Goals (& Policies & Actions)

- Goal 1: Improve the neighborhood economy and empower local residents by encouraging the growth and creation of local businesses.
- Goal 2: Promote redevelopment that enhances the character of our neighborhood while increasing access to daily needs.
- Goal 3: Promote living wage employment opportunities within the neighborhood.

Transportation Goals (& Policies & Actions)

- Goal 4: Ensure a safe transportation system for all users.
- Goal 5: Promote a connected and efficient multi-modal transportation system that is equitable and affordable.
- Goal 6: Plan for a transportation system that is future oriented, environmentally responsible and transitions to zero carbon.

1. RR- SC Neighborhood Plan

Parks and Natural Resources Goals (& Policies & Actions)

- Goal 7: Provide natural areas which are healthy, thriving spaces that provide habitat for native species and function as natural infrastructure.
- Goal 8: Provide neighborhood access to recreational opportunities, parks, and community centers.
- Goal 9: Make the Willamette River a vital, healthy and accessible part of the neighborhoods.
- Goal 10: Preserve agricultural land and open spaces within and around our neighborhood boundaries.

1. RR- SC Neighborhood Plan

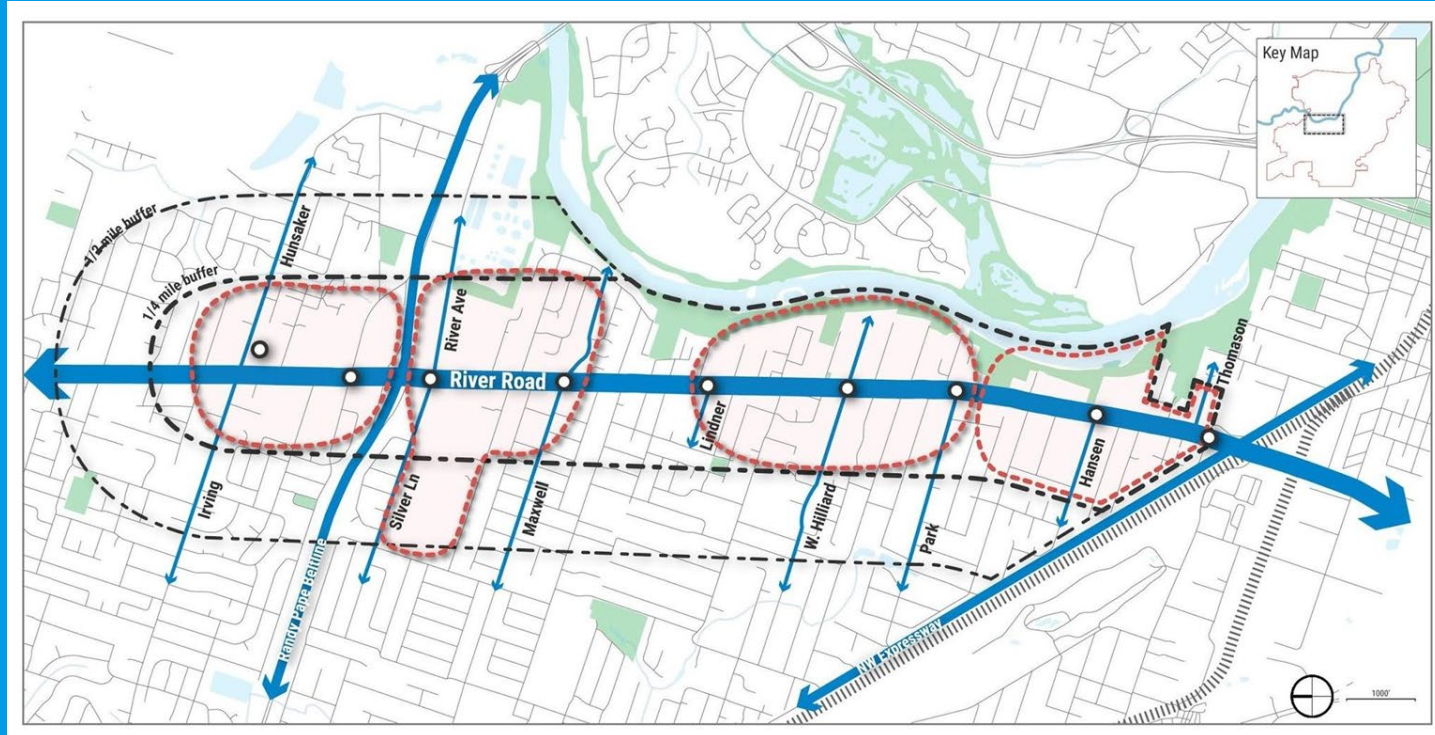
Land Use Goals (& Policies & Actions)

- Goal 11: Support development that is well designed and economically, socially and environmentally sustainable.
- Goal 12: Ensure future housing addresses the needs of the community.
- Goal 13: Support a thriving, vibrant and active River Road corridor.
- Goal 14: Promote land use and development that protects and enhances neighborhood character.

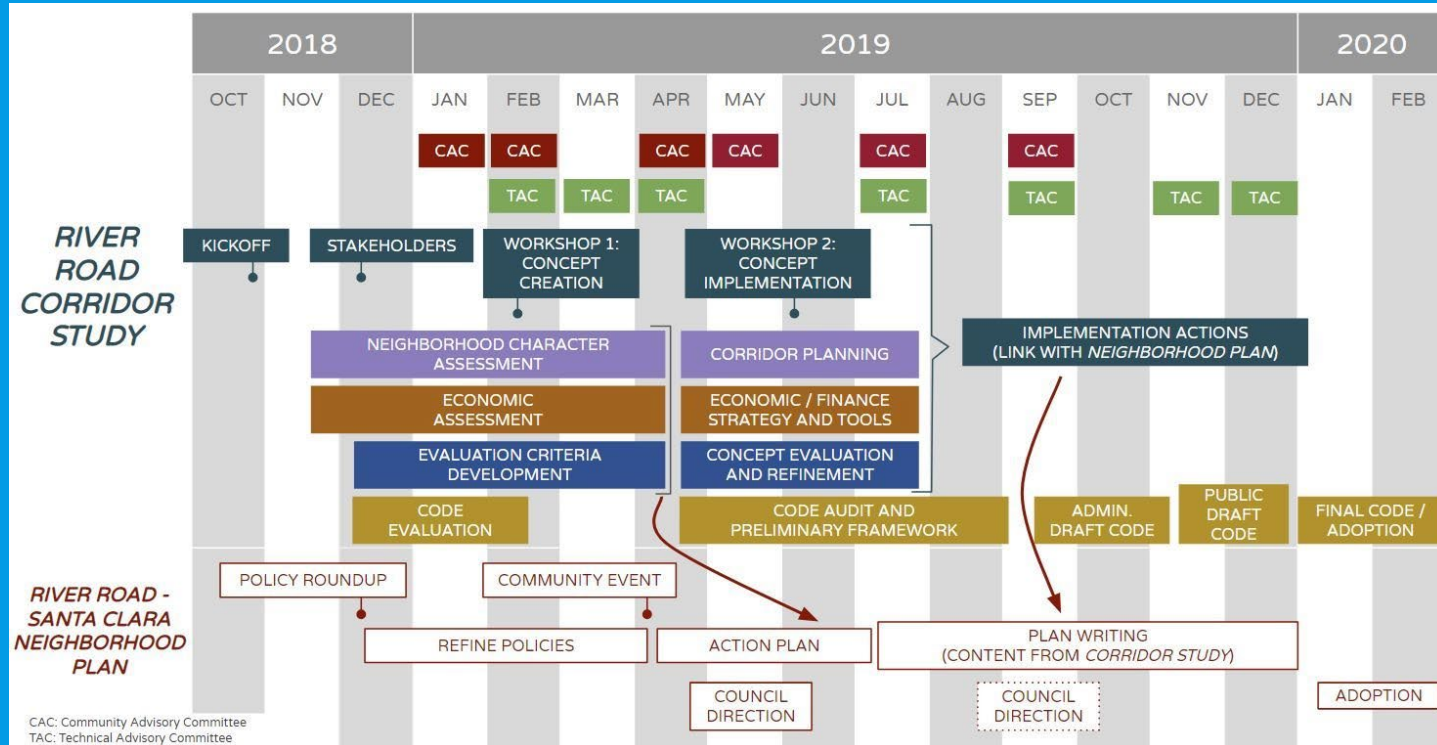
Community Goals (& Policies & Actions)

- Goal 15: Ensure our community is welcoming and inclusive.
- Goal 16: Foster collaborative relationships to build a stronger and more resilient community
- Goal 17: Provide comprehensive public services and community resources responsive to the needs of the community.
- Goal 18: Increase resilience in local food, water, and disaster preparedness systems necessary for human health and wellbeing.

2. River Road Corridor Study








1 + 2. Timeline





3. Moving Ahead: River Road EmX



3. Moving Ahead: River Road EmX

 Cost	No-Build	Enhanced Corridor	EmX
Capital Cost	\$0.0M	\$24.0M	\$78.0M
Systemwide Annual Operating Cost <i>(Change from No-Build)</i>	\$0.0M	-\$0.6M	\$2.0M
 Transit Performance			
In-Vehicle Transit Travel Time Savings	0 min	5 min	8 min
Systemwide Annual Ridership Increase <i>(Compared to No-Build)</i>	0	33,000	246,000
 Bicycling & Walking			
New Bike/Ped Access and Safety Improvements <i>(1-5 rating)</i>	★	★★★	★★★★★
 Property & Development Impacts			
Support Development and Redevelopment <i>(1-5 rating)</i>	★	★★★	★★★★★
Number of Medium and Large Trees Impacted	0	13	132
Number/Acreage of Acquisitions	0/0	5/1.3	40/2.2
Potential Property Displacements ¹	0	4	6
Parking Impacts: On-Street/Off-Street <i>(number of spaces)</i>	0/0	0/2	0/31
 Existing Jobs & Population Served			
Jobs	≈19,000	≈19,000	≈28,000
Population	≈35,000	≈35,000	≈44,000

¹Mitigation measures would be used to avoid or reduce impacts

 Supports Project Criteria
 Does not Support Project Criteria



Thank You!

Dr. Rob Zako

